

**Known Archaeological Sites\*  
and Areas Sensitive for  
Native American Archaeology\* in  
Livermore Falls**

**information provided for planning by  
Maine Historic Preservation Commission  
updated April 2014**

\*dated material subject to future revision and provided for planning purposes  
map 1/1

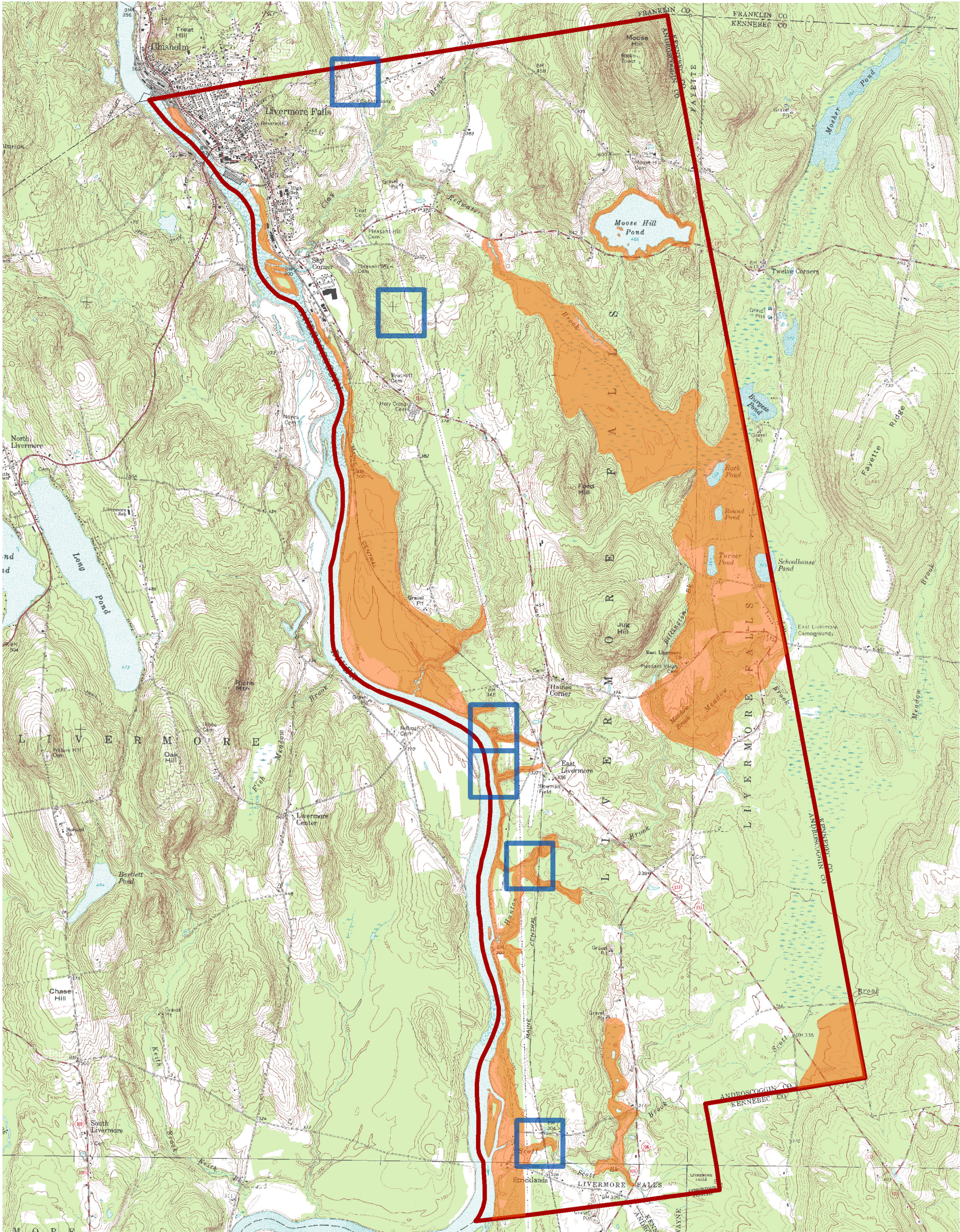


Areas sensitive for Native American,  
pre-European, archaeology



1/2 k square intersecting a known Native American,  
pre-European, archaeological site.

There are no known historic  
archaeological sites in  
the town of Livermore Falls at this date.



0 0.350.7 1.4 2.1 2.8 3.5  
Kilometers