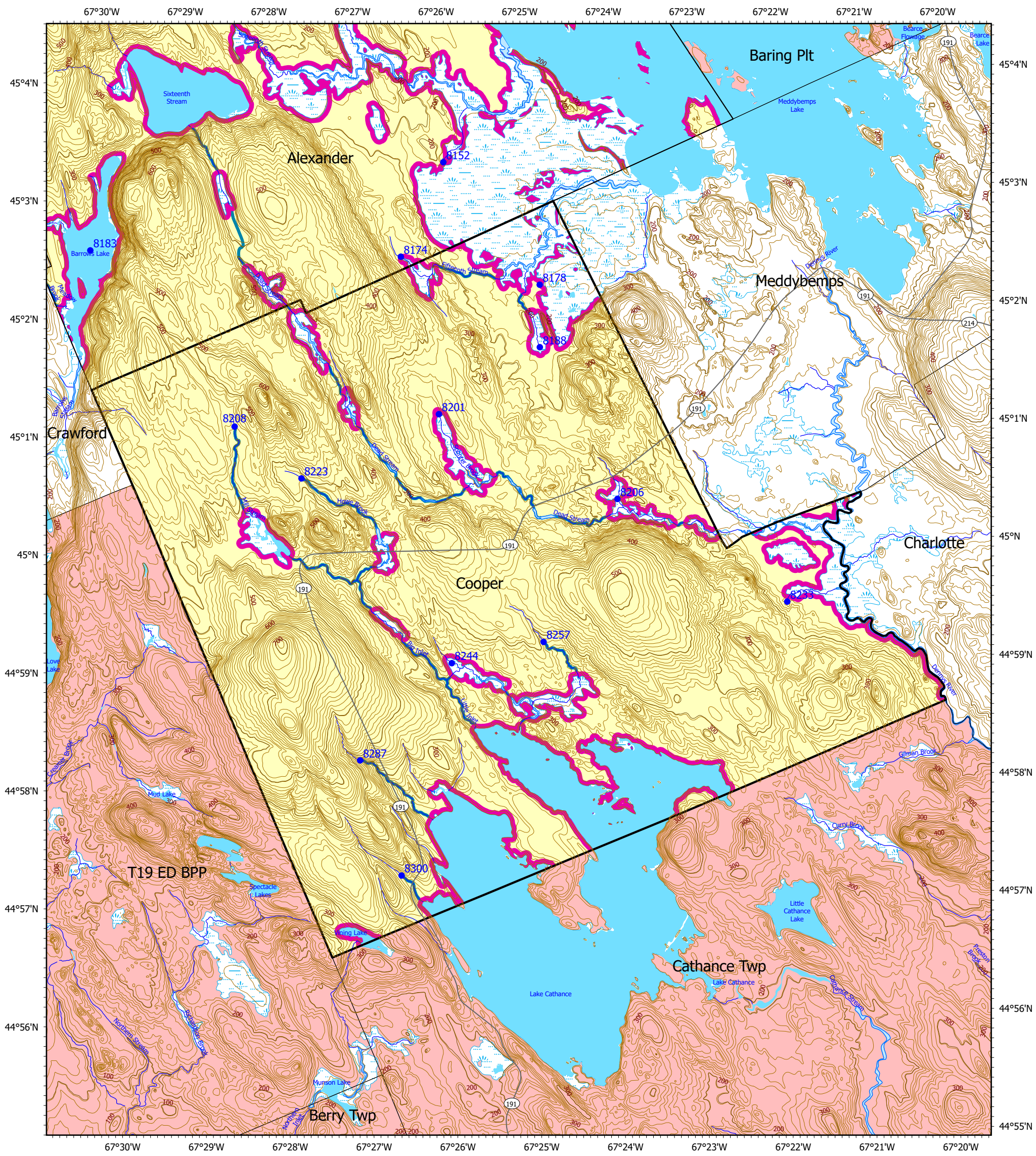


# Statewide Standards for Timber Harvesting in the Shoreland Area\* Map



This map is **ADVISORY**, for planning purposes only. Actual ground conditions and water body locations determine where and how MFS timber harvesting rules apply. Contact the MFS for additional information/assistance from a MFS Forester.

## Forest Operation Notification & Shoreland Area\* Map

Adoption Date  
4/2/2026

### Cooper

<p><b>Wetlands</b></p> <ul style="list-style-type: none"> <li>Non-forested Wetlands Greater Than 10 acres (Lacustrine, Palustrine)</li> <li>Emergent or Marine Wetland</li> </ul>	<p><b>Drainage Points</b></p> <ul style="list-style-type: none"> <li>1234 300 Acre Drainage Point (start of the 75ft buffer) 1234 - ID Number (location info)</li> <li>56 25 Square Mile Drainage Point (start of the 250 ft buffer) 56 - ID Number (location info)</li> </ul>	<p><b>Buffers</b></p> <ul style="list-style-type: none"> <li>250 Foot Buffer Zones                     <ul style="list-style-type: none"> <li>Great Ponds</li> <li>Non-forested Wetlands greater than 10 acres</li> <li>Rivers below the 25 square mile drainage point</li> <li>Coastal wetlands</li> <li>Tidal Waters</li> </ul> </li> <li>75 Foot Buffer Zones                     <ul style="list-style-type: none"> <li>Streams between the 300 acre drainage point and the 25 square mile drainage point</li> </ul> </li> <li>Shoreline Integrity - Streams draining less than 300 acres, ponds and non-forested wetlands greater than 0.1 acres and less than 10 acres</li> </ul>	<p><b>Locator Map</b></p> <p>■ SWS Town</p>
<p>Department of Agriculture, Conservation and Forestry Maine Forest Service</p> <p><b>Maine Forest Service</b></p> <p>For additional information, please contact the MFS at: 1-207-287-2791 or 1-800-367-0223 (in-State)</p> <p>Email us at: <a href="mailto:forestinfo@maine.gov">forestinfo@maine.gov</a></p> <p>or on the web at: <a href="http://www.maineforestservice.gov">www.maineforestservice.gov</a></p>	<p>■ SWS Town</p> <p>■ FON Town Statewide Standard Rules do not apply (Town/DEP Standards apply)</p> <p>■ LUPC - Unorganized or Deorganized Town</p> <p>■ Outside Maine</p>	<p>June 2026</p> <p>1 0.5 0 1 2 Miles</p>	

\*See MFS Rule - Chapter 21 for additional information.  
Greg T.Miller D:\MFS\gis\_data\GWS\_arcmap\GWS Town Final Map 11x17\GWS Town Final Map 11x17.aprx